

Appendix 3 - Evaluation of Pilot Scheme Selective Licensing Areas (Full Data & Analysis)

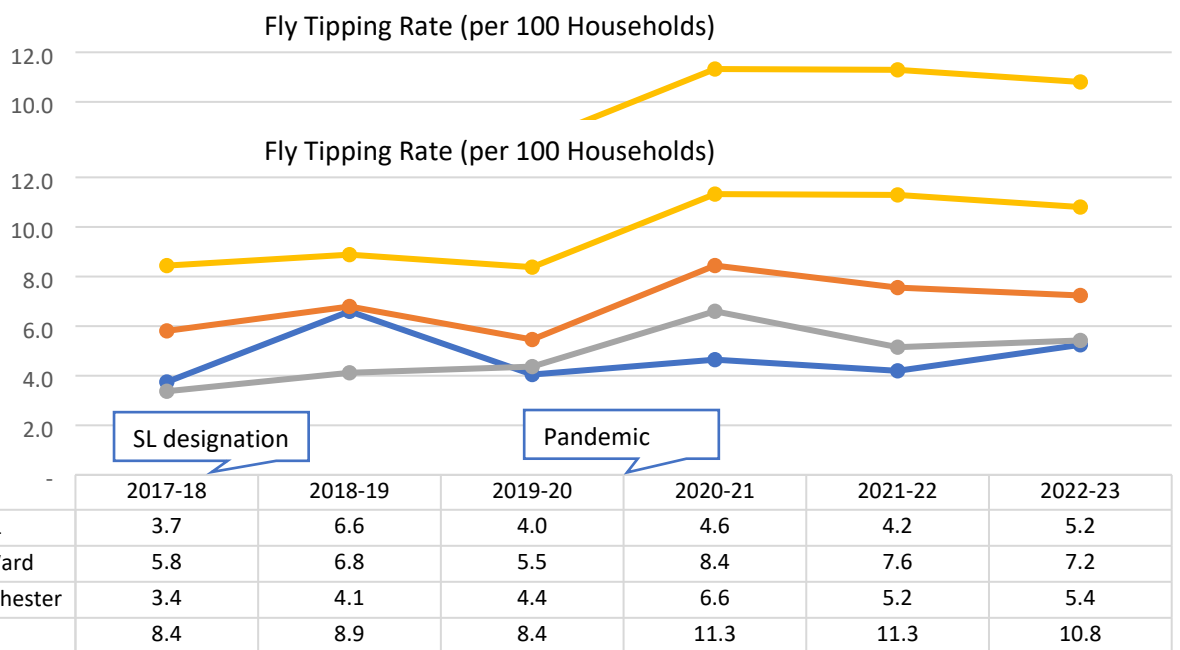
1. Fly Tipping

Fly tipping data is taken from only those jobs that are reported as 'complete' by our contractor.

1.1 Fly Tipping: Old Moat

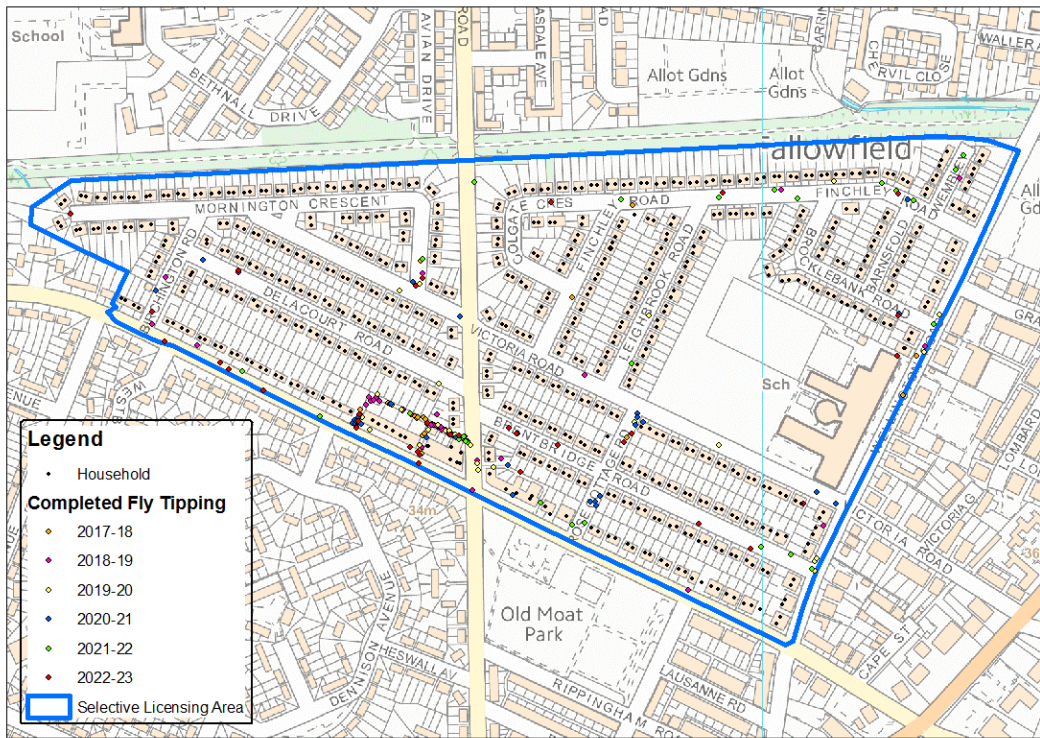
Fly tipping data is taken from only those jobs that are reported as 'complete' by our contractor.

1.1 Fly Tipping: Old Moat



Period	Old Moat SL	Old Moat Ward	South Manchester	Manchester
2017-18	25	366	3,195	21,324
2018-19	44	428	3,900	22,440
2019-20	27	344	4,136	21,166
2020-21	31	532	6,249	28,608
2021-22	28	476	4,878	28,525
2022-23	35	456	5,135	27,289

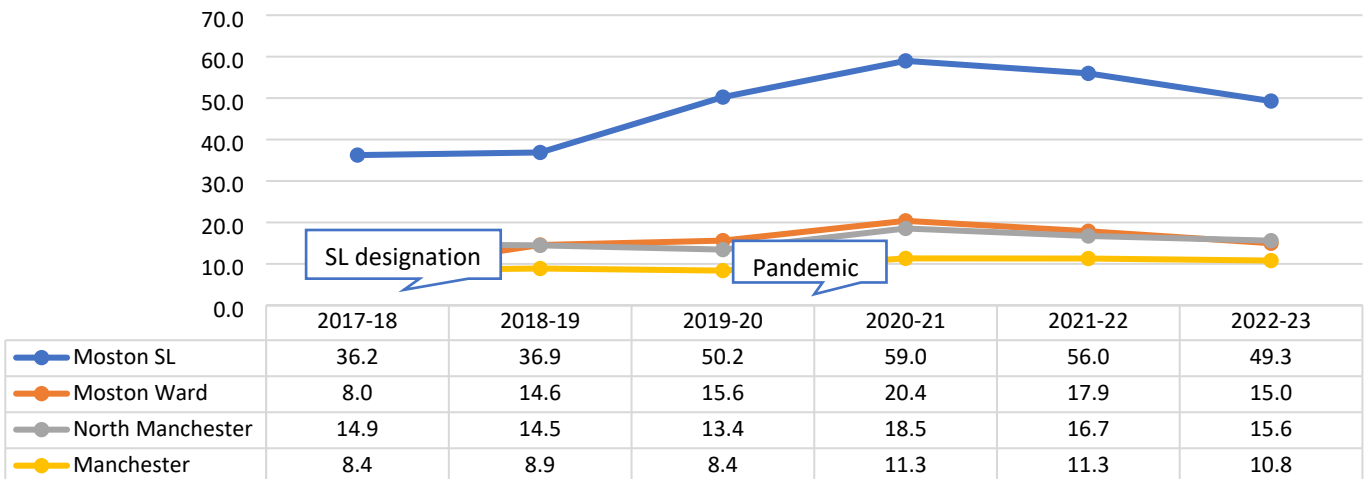
Map 1.1 Fly tipping in Old Moat SL Area – 2017/18 to 2022/23



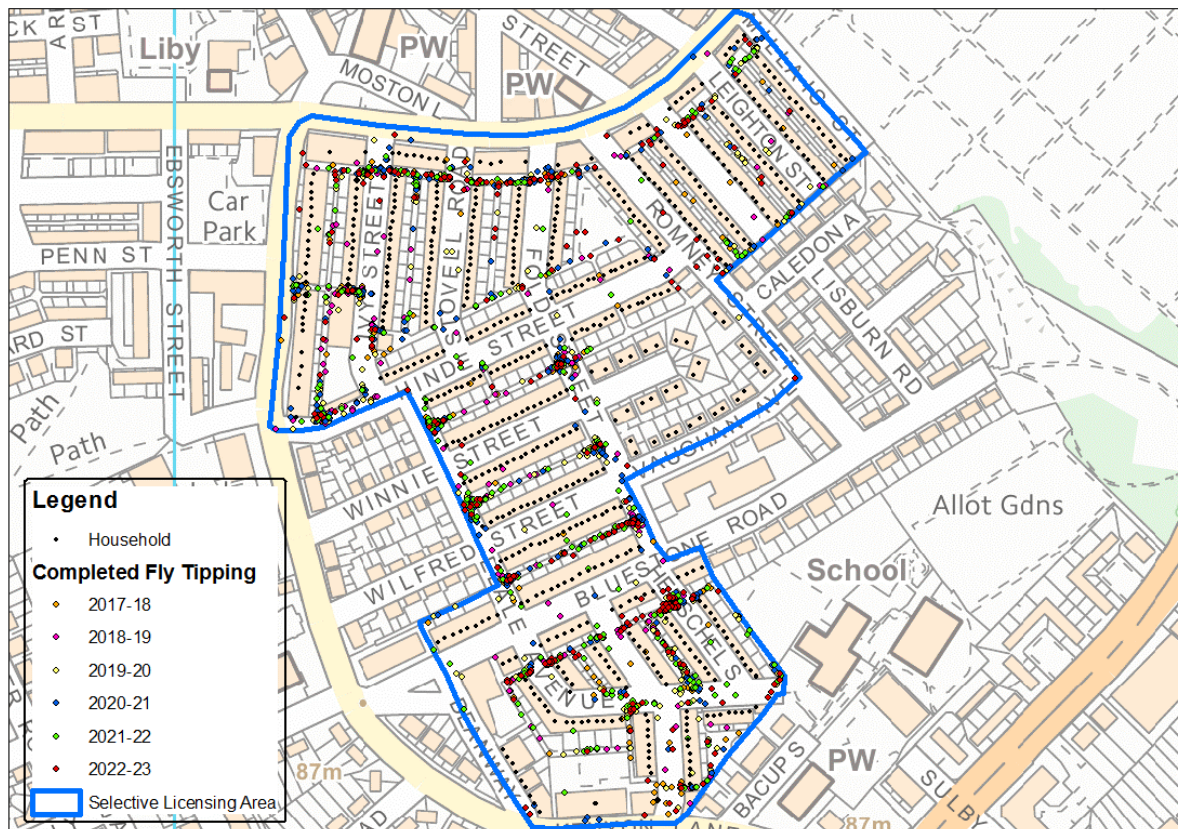
1.2 Fly Tipping: Moston

Period	Moston SL	Moston Ward	North Manchester	Manchester
2017-18	228	631	10,728	21,324
2018-19	232	1,153	10,449	22,440
2019-20	316	1,237	9,713	21,166
2020-21	371	1,615	13,396	28,608
2021-22	352	1,416	12,083	28,525
2022-23	310	1,187	11,270	27,289

Fly Tipping Rate (per 100 Households)



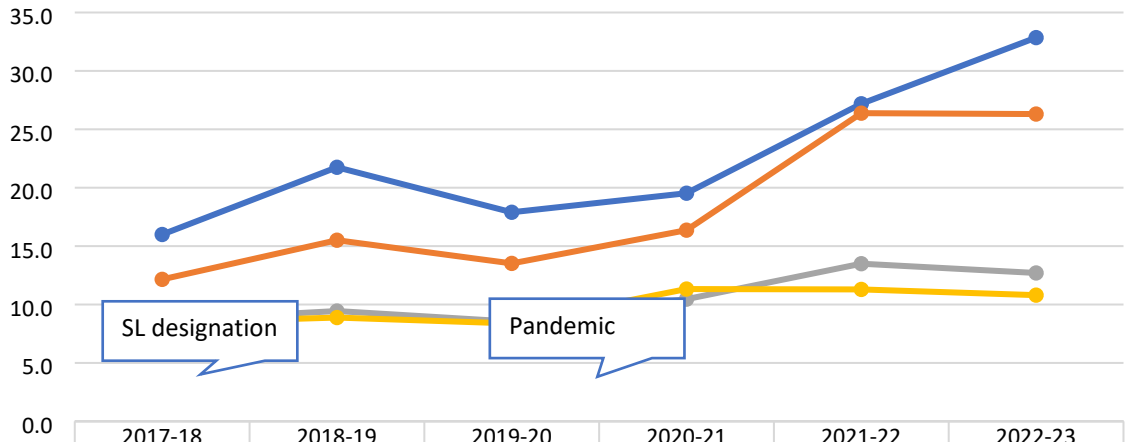
Map 1.2 Fly tipping in Moston SL Area – 2017/18 to 2022/23



1.3 Fly Tipping: Moss Side

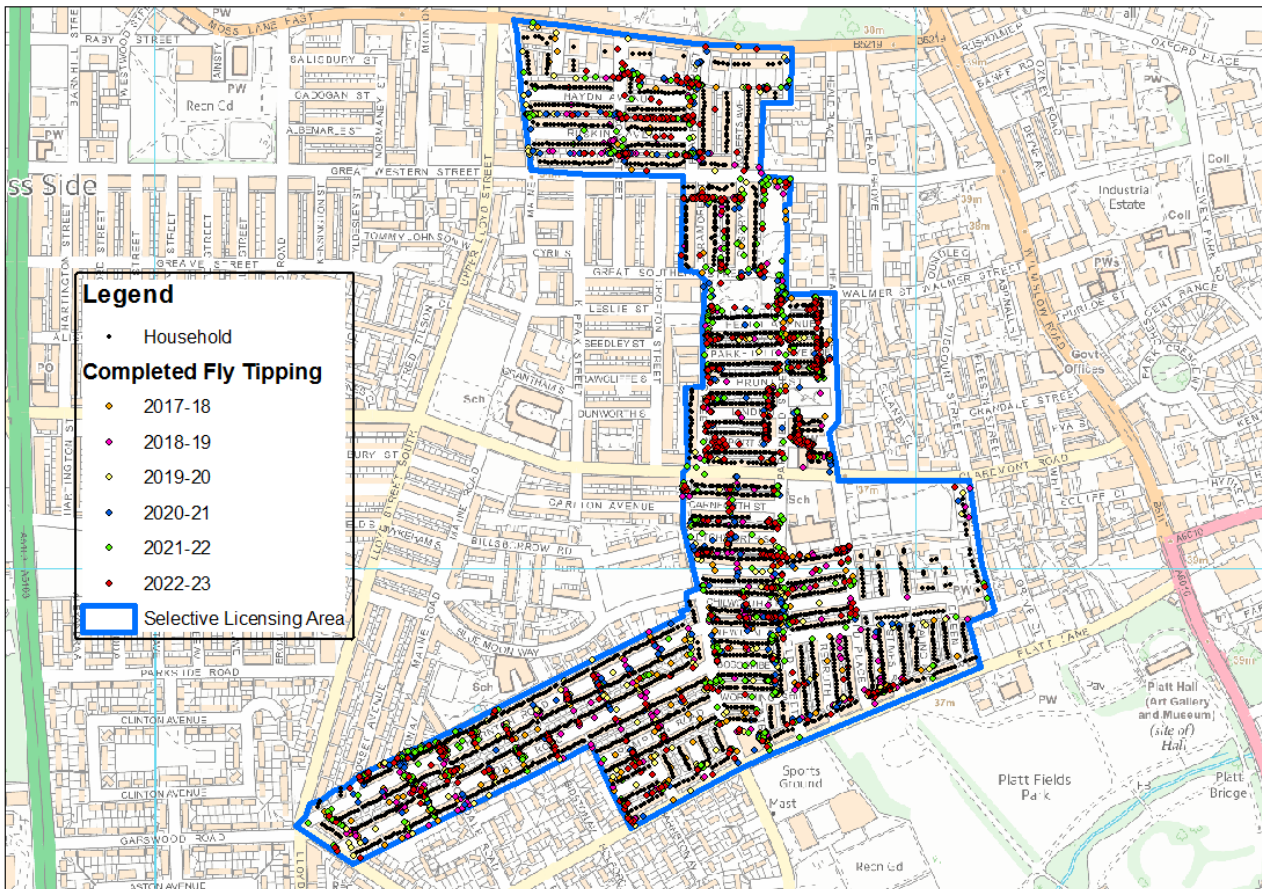
Period	Moss Side SL	Moss Side Ward	Central Manchester	Manchester
2017-18	353	961	7401	21324
2018-19	480	1226	8091	22440
2019-20	395	1069	7317	21166
2020-21	431	1294	8963	28608
2021-22	600	2086	11564	28525
2022-23	725	2080	10884	27289

Fly Tipping Rate (per 100 Households)



	2017-18	2018-19	2019-20	2020-21	2021-22	2022-23
● Moss Side SL	16.0	21.7	17.9	19.5	27.2	32.9
● Moss Side Ward	12.2	15.5	13.5	16.4	26.4	26.3
● Central Manchester	8.6	9.4	8.5	10.5	13.5	12.7
● Manchester	8.4	8.9	8.4	11.3	11.3	10.8

Map 1.3 Fly tipping in Moss Side SL Area – 2017/18 to 2022/23



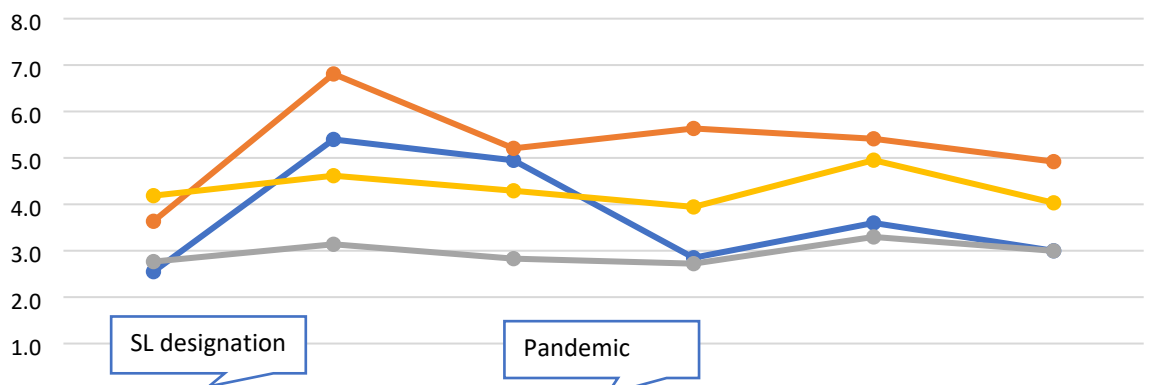
2. Street Cleansing & Untidy Gardens

Street Cleansing requests and untidy gardens reported on CRM.

2.1 Street Cleansing & Untidy Gardens: Old Moat

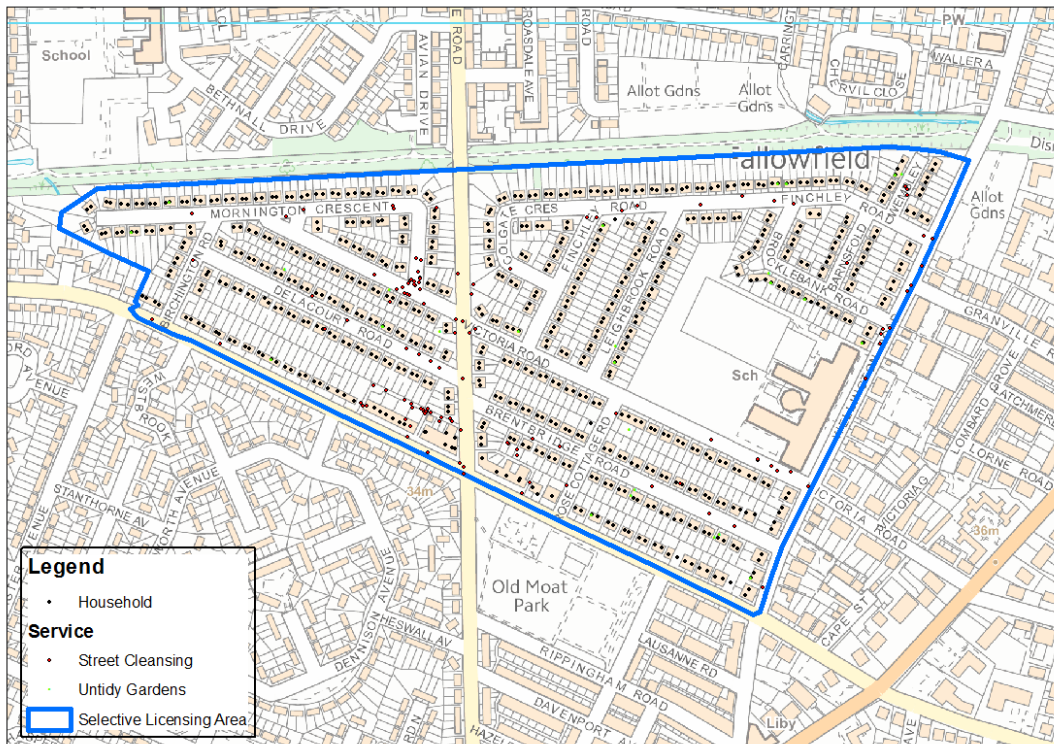
Period	Old Moat SL	Old Moat Ward	South Manchester	Manchester
2017-18	17	229	2,619	10,575
2018-19	36	429	2,972	11,662
2019-20	33	328	2,679	10,842
2020-21	19	355	2,577	9,962
2021-22	24	341	3,122	12,507
2022-23	20	310	2,838	10,186

Street Cleansing & Untidy Gardens Rate (per 100 Households)



	2017-18	2018-19	2019-20	2020-21	2021-22	2022-23
Old Moat SL	2.5	5.4	4.9	2.8	3.6	3.0
Old Moat Ward	3.6	6.8	5.2	5.6	5.4	4.9
South Manchester	2.8	3.1	2.8	2.7	3.3	3.0
Manchester	4.2	4.6	4.3	3.9	5.0	4.0

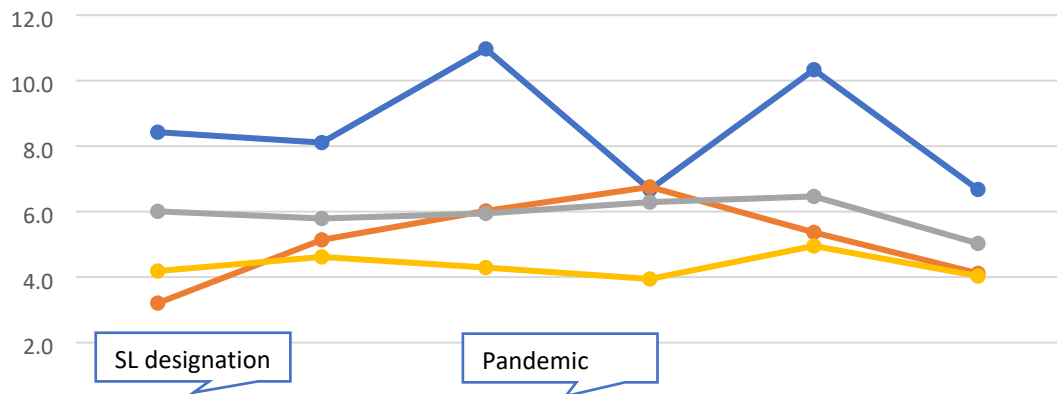
Map 2.1 Untidy Gardens & Street Cleansing in Old Moat SL Area – 2017/18 to 2022/23



2.2 Street Cleansing & Untidy Gardens: Moston

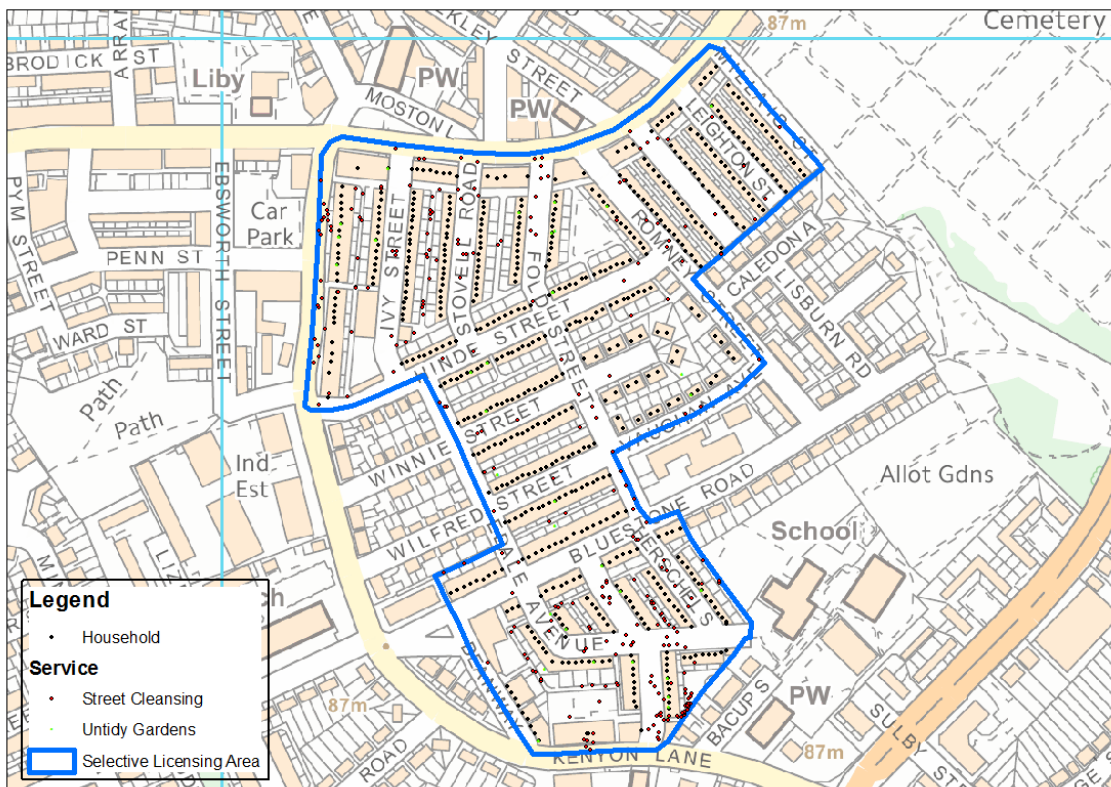
Period	Moston SL	Moston Ward	North Manchester	Manchester
2017-18	53	254	4,340	10,575
2018-19	51	407	4,182	11,662
2019-20	69	477	4,294	10,842
2020-21	42	535	4,543	9,962
2021-22	65	425	4,669	12,507
2022-23	42	326	3,632	10,186

Street Cleansing & Untidy Gardens Rate (per 100 Households)



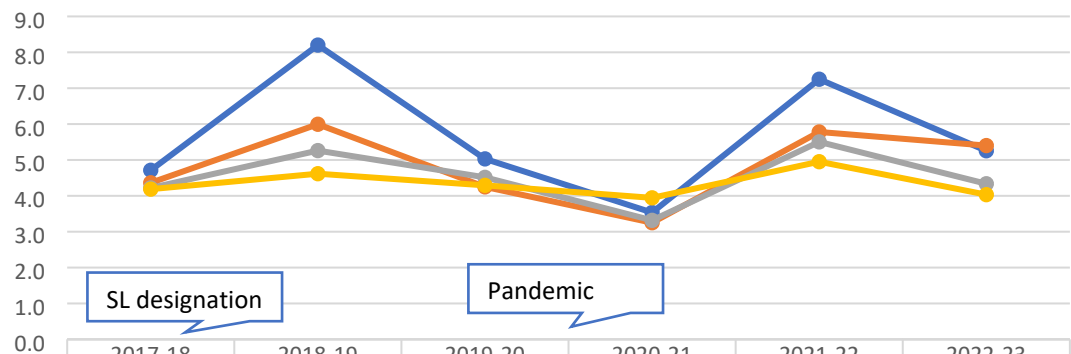
	2017-18	2018-19	2019-20	2020-21	2021-22	2022-23
● Moston SL	8.4	8.1	11.0	6.7	10.3	6.7
● Moston Ward	3.2	5.1	6.0	6.8	5.4	4.1
● North Manchester	6.0	5.8	5.9	6.3	6.5	5.0
● Manchester	4.2	4.6	4.3	3.9	5.0	4.0

Map 2.2 Untidy Gardens & Street Cleansing in Moston SL Area – 2017/18 to 2022/23



2.3 Street Cleansing & Untidy Gardens: Moss Side

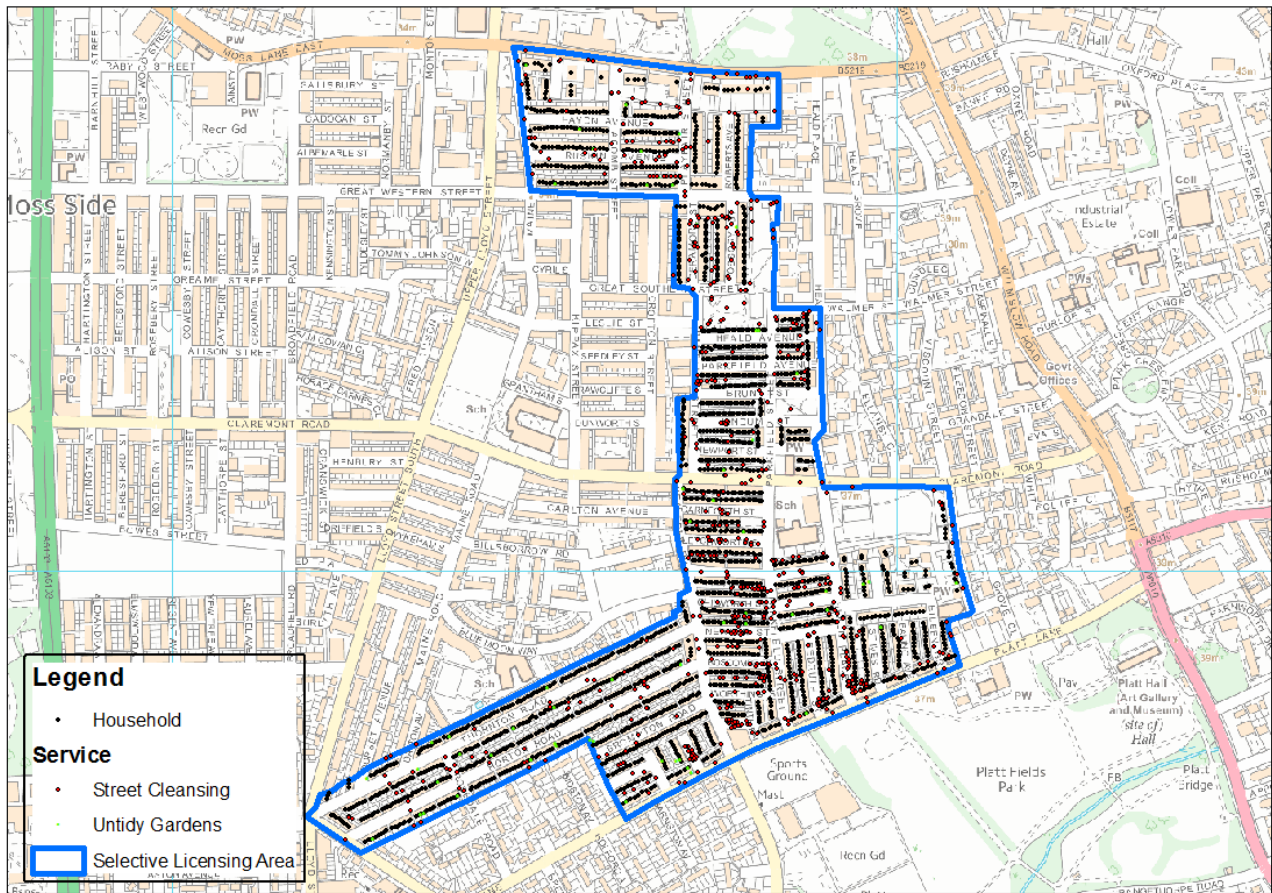
Street Cleansing & Untidy Gardens Rate (per 100 Households)



	2017-18	2018-19	2019-20	2020-21	2021-22	2022-23
— Moss Side SL	4.7	8.2	5.0	3.5	7.2	5.3
— Moss Side Ward	4.4	6.0	4.2	3.3	5.8	5.4
— Central Manchester	4.2	5.3	4.5	3.3	5.5	4.3
— Manchester	4.2	4.6	4.3	3.9	5.0	4.0

Period	Moss Side SL	Moss Side Ward	Central Manchester	Manchester
2017-18	104	345	3,616	10,575
2018-19	181	474	4,508	11,662
2019-20	111	336	3,869	10,842
2020-21	78	257	2,842	9,962
2021-22	160	457	4,716	12,507
2022-23	116	427	3,716	10,186

Map 2.3 Untidy Gardens & Street Cleansing in Moss Side SL Area – 2017/18 to 2022/23



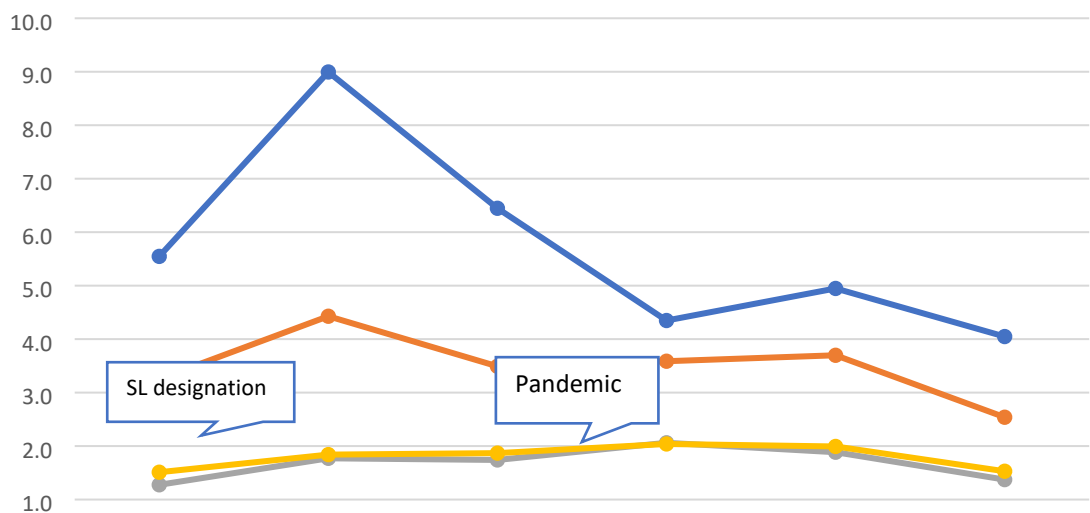
3. Housing Related Requests

Housing related requests report for Dampness & Leaks, Domestic Noise, Doors and Windows, Fire Precautions, Heating & Hot Water, Overcrowding and Unlawful Evictions

3.1 Housing Related Requests: Old Moat

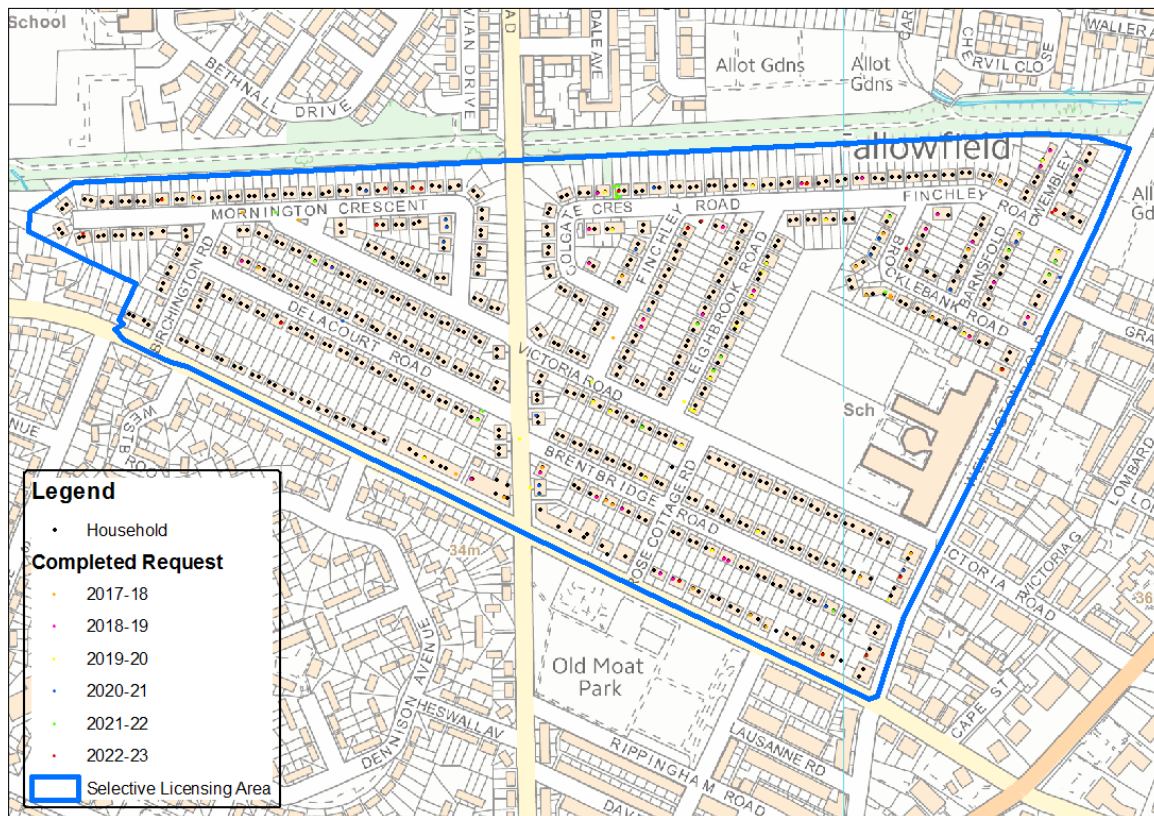
Period	Old Moat SL	Old Moat Ward	South Manchester	Manchester
2017-18	37	205	1,208	3,817
2018-19	60	279	1,677	4,649
2019-20	43	220	1,648	4,719
2020-21	29	226	1,952	5,152
2021-22	33	233	1,785	5,034
2022-23	27	160	1,300	3,863

Housing Related Request Rate (per 100 Households)



	2017-18	2018-19	2019-20	2020-21	2021-22	2022-23
Old Moat SL	5.5	9.0	6.4	4.3	4.9	4.0
Old Moat Ward	3.3	4.4	3.5	3.6	3.7	2.5
South Manchester	1.3	1.8	1.7	2.1	1.9	1.4
Manchester	1.5	1.8	1.9	2.0	2.0	1.5

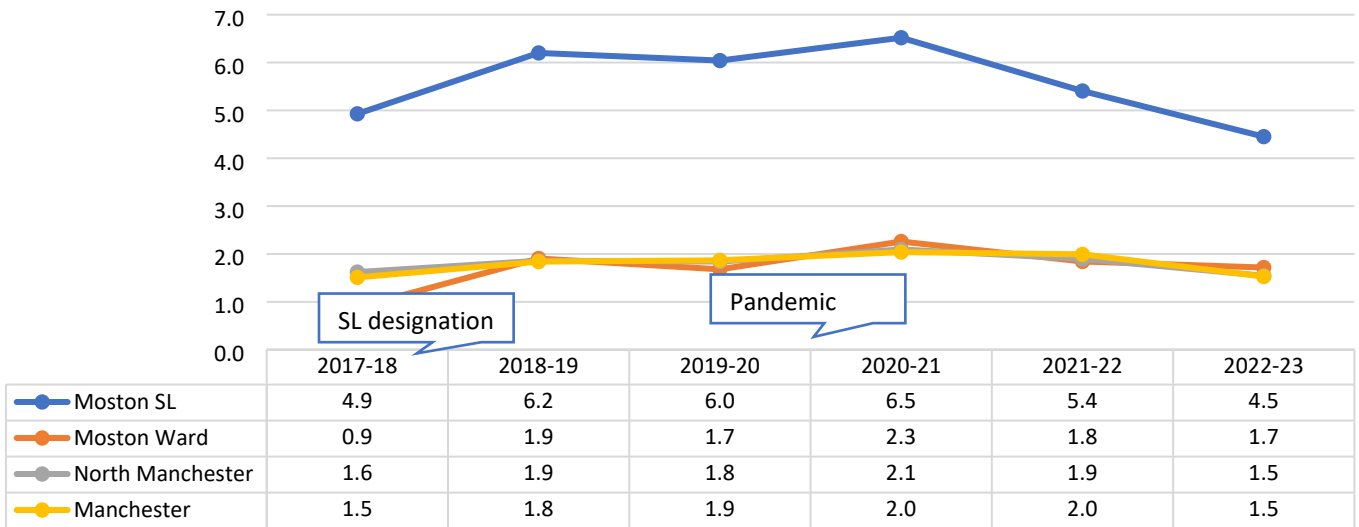
Map 3.1 Housing Related Requests in Old Moat SL Area – 2017/18 to 2022/23



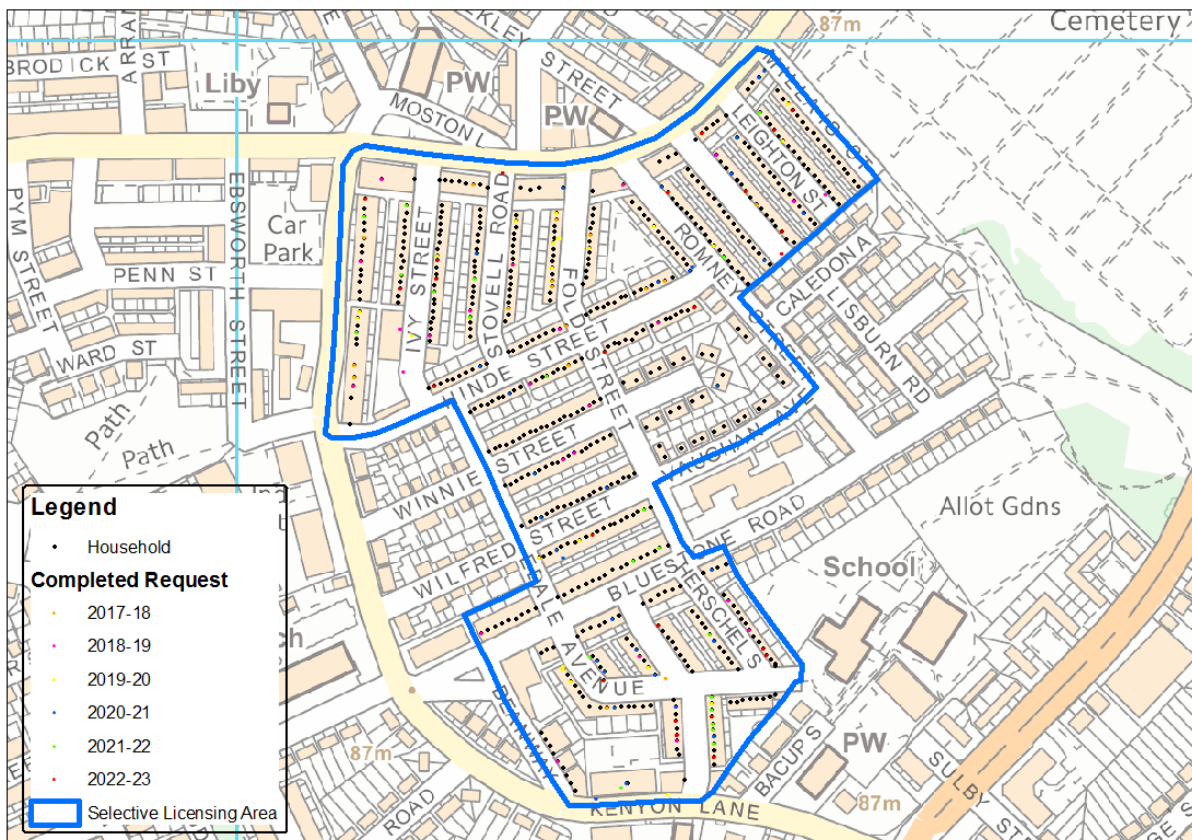
3.2 Housing Related Requests: Moston

Period	Moston SL	Moston Ward	North Manchester	Manchester
2017-18	31	70	1172	3817
2018-19	39	151	1342	4649
2019-20	38	133	1330	4719
2020-21	41	179	1513	5152
2021-22	34	146	1371	5034
2022-23	28	136	1116	3863

Housing Related Requests Rate (per 100 Households)



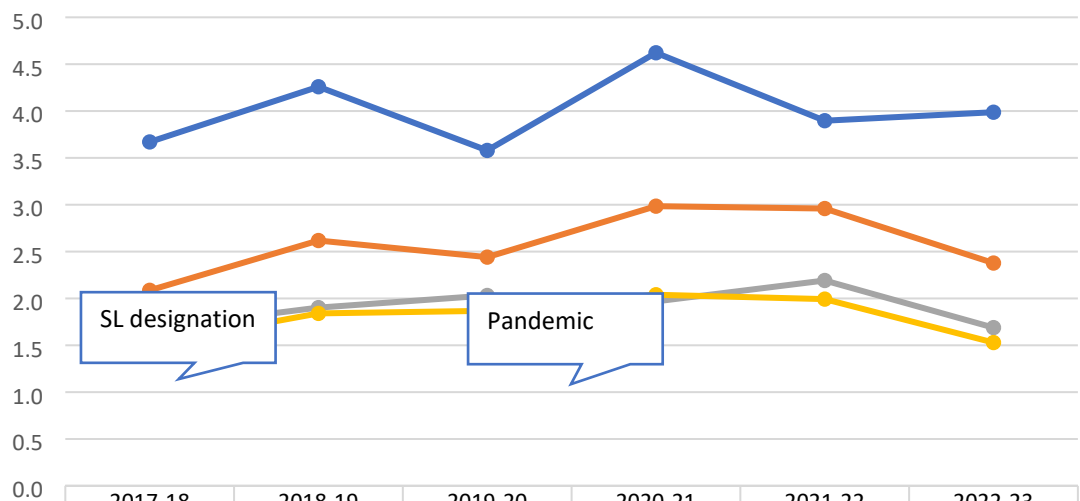
Map 3.2 Housing Related Requests in Moston SL Area – 2017/18 to 2022/23



3.3 Housing Related Requests: Moss Side

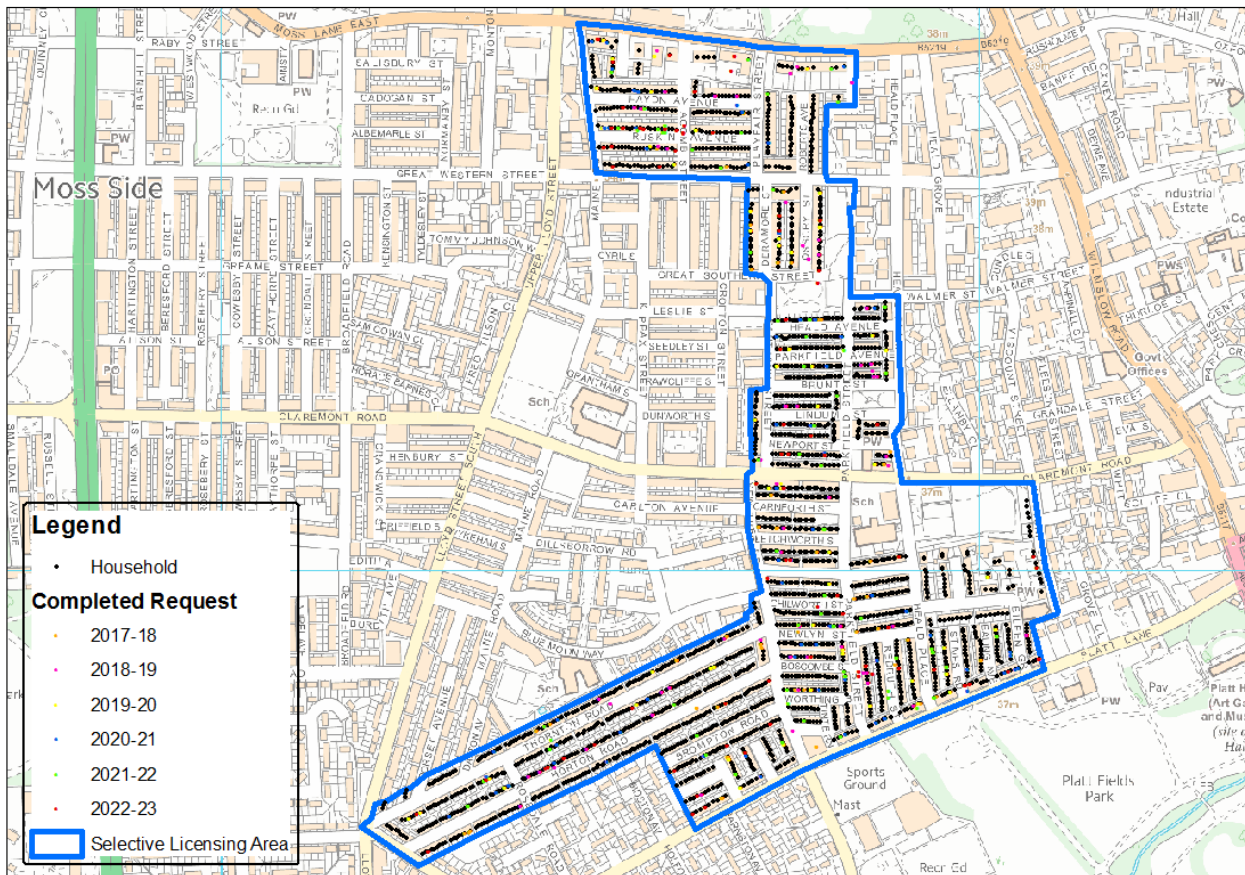
Period	Moss Side SL	Moss Side Ward	Central Manchester	Manchester
2017-18	81	165	1437	3817
2018-19	94	207	1630	4649
2019-20	79	193	1741	4719
2020-21	102	236	1687	5152
2021-22	86	234	1878	5034
2022-23	88	188	1447	3863

Housing Related Requests Rate (per 100 Households)



	2017-18	2018-19	2019-20	2020-21	2021-22	2022-23
— Moss Side SL	3.7	4.3	3.6	4.6	3.9	4.0
— Moss Side Ward	2.1	2.6	2.4	3.0	3.0	2.4
— Central Manchester	1.7	1.9	2.0	2.0	2.2	1.7
— Manchester	1.5	1.8	1.9	2.0	2.0	1.5

Map 3.3 Housing Related Requests in Moss Side SL Area – 2017/18 to 2022/23



4. Five-year change (prior to introduction of Selective Licensing) and two-year change (Pre-Pandemic)

4.1 Fly Tipping

Fly tipping over the past five years has seen an increase of 28% across the whole city. This increase across the city has been disproportionately distributed within individual areas, with South Manchester increasing 60.7%, Central Manchester 47.1% and North Manchester 5.1%.

Completed Fly Tipping Cases in the ward of Old Moat have increased 24.6% and in looking specifically at the selective licensing area within the ward, they have increased in 40% (20% lower than the increase within the rest of South Manchester). Although there has been just a 5% increase in North Manchester, the ward of Moston has seen a rise of 88.1% - this is significantly higher than the selective licensing area which rose 36%. The selective licensing area within Moss Side increased 105.4%, however this is lower than the increase across the ward which was 116.4%.

Area	2017-18	2022-23	5-Year change	5-Year % change
Old Moat SL	25	35	10	40.0%
Old Moat Ward	366	456	90	24.6%
South Manchester	3,195	5,135	1,940	60.7%
Moston SL	228	310	82	36.0%

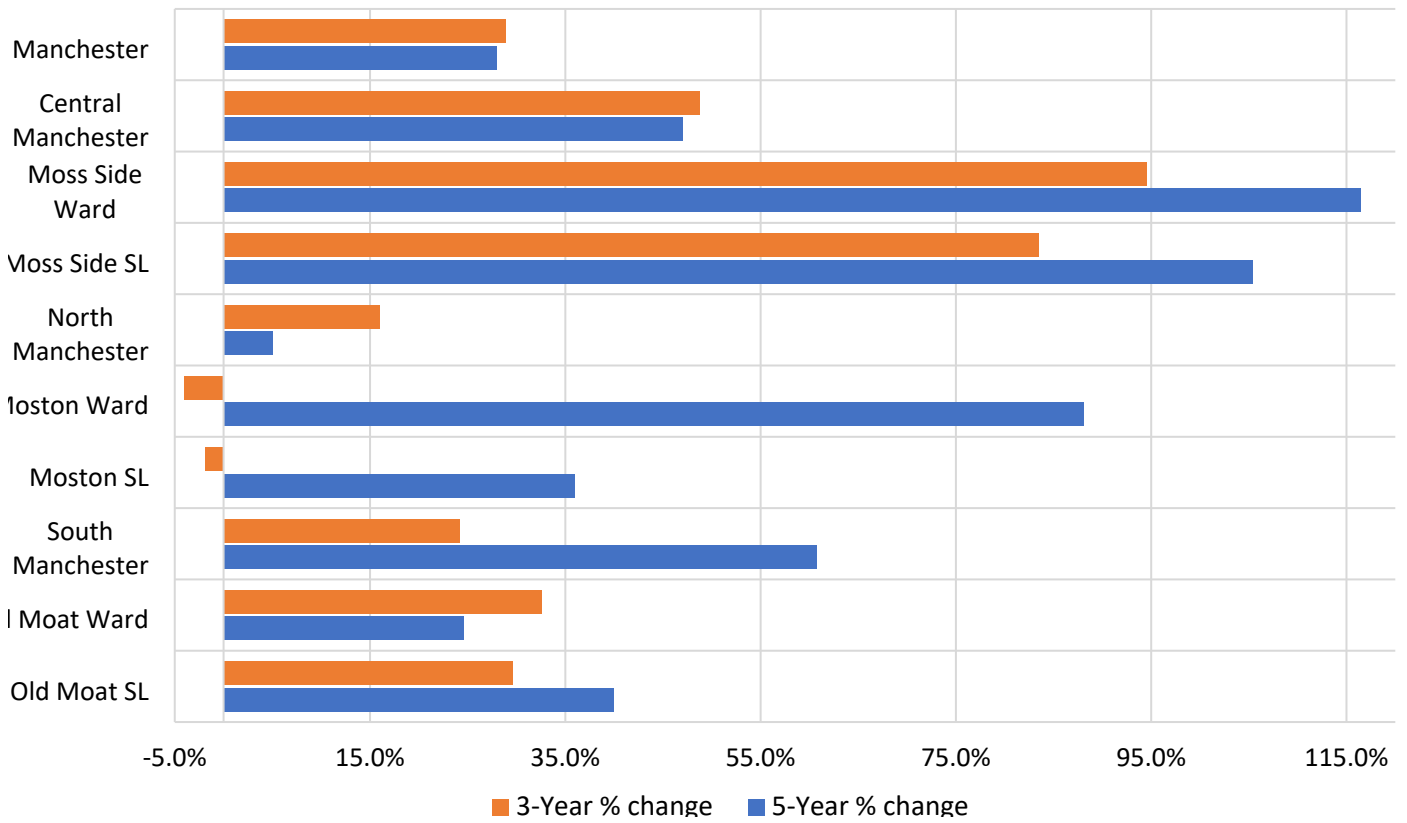
Moston Ward	631	1,187	556	88.1%
North Manchester	10,728	11270	542	5.1%
Moss Side SL	353	725	372	105.4%
Moss Side Ward	961	2,080	1,119	116.4%
Central Manchester	7,401	10,884	3,483	47.1%
Manchester	21,324	27,289	5,965	28.0%

Fly tipping over the past three years has seen an increase of 28.9% across the whole city. This increase across the city has been disproportionately distributed within individual areas, with South Manchester increasing 24.4%, Central Manchester 48.7% and North Manchester 16%.

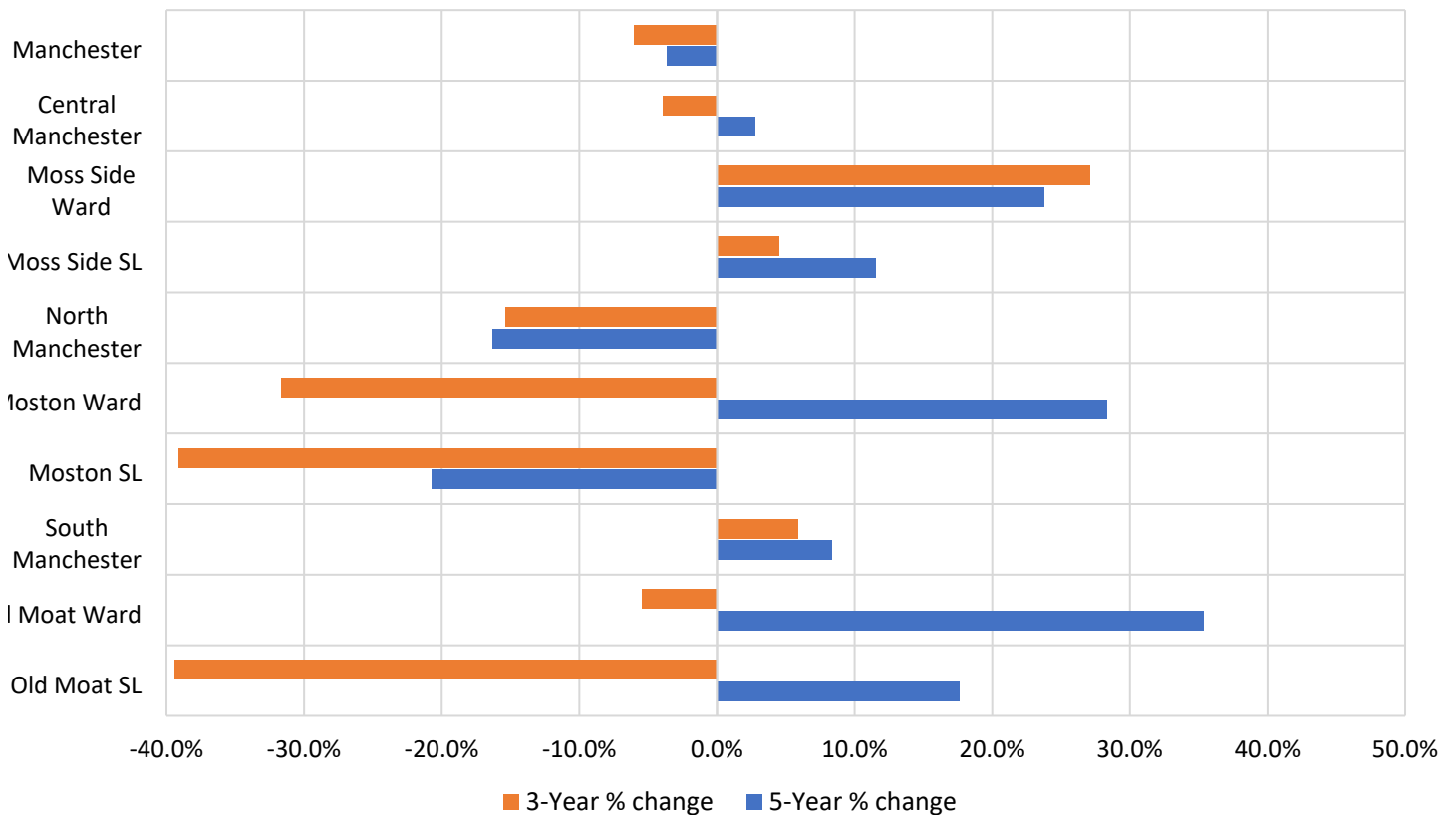
Completed Fly Tipping Cases in the ward of Old Moat have increased 32.6% and in looking specifically at the selective licensing area within the ward, they have increased in 29.6%. Although there has been a 16% increase in North Manchester, the ward of Moston has seen a decline of 4% - the selective licensing in Moston also declined 1.9% across 3 years. The selective licensing area within Moss Side increased 83.5%, however this is lower than the increase across the ward which was 94.6%.

Area	2019-20	2022-23	3-Year change (pre-pandemic)	3-Year % change
Old Moat SL	27	35	8	29.6%
Old Moat Ward	344	456	112	32.6%
South Manchester	4,136	5,135	999	24.2%
Moston SL	316	310	- 6	-1.9%
Moston Ward	1,237	1,187	- 50	-4.0%
North Manchester	9,713	11270	1,557	16.0%
Moss Side SL	395	725	330	83.5%
Moss Side Ward	1,069	2,080	1,011	94.6%
Central Manchester	7,317	10,884	3,567	48.7%
Manchester	21,166	27,289	6,123	28.9%

Fly Tipping: 5 and 3 Year % Change



Street Cleansing & Untidy Gardens: 5 and 3 Year % Change



4.2 Street Cleansing & Untidy Gardens

Incidents of Street Cleansing and Untidy Gardens over the past five years has seen a decline of 3.7% across the whole city. This decrease across the city has been disproportionately distributed within individual areas, with South Manchester increasing 8.4%, Central Manchester declining 2.8% and North Manchester falling 16.3%.

Completed incidents of Street Cleansing and Untidy Gardens in the ward of Old Moat have increased 35.4% and in looking specifically at the selective licensing area within the ward, they have increased significantly less at 17.6%. Although there has been just a 16.3% decrease in North Manchester, the ward of Moston has seen a rise of 28.3% - however, in looking just at the selective licensing area, they have decline 20.8%. The selective licensing area within Moss Side increased 11.5%, however this is lower than the increase across the ward which was 23.8%.

Area	2017-18	2022-23	5-Year change	5-Year % change
Old Moat SL	17	20	3	17.6%
Old Moat Ward	229	310	81	35.4%
South Manchester	2619	2838	219	8.4%
Moston SL	53	42	- 11	-20.8%
Moston Ward	254	326	72	28.3%
North Manchester	4340	3632	- 708	-16.3%
Moss Side SL	104	116	12	11.5%
Moss Side Ward	345	427	82	23.8%
Central Manchester	3616	3716	100	2.8%
Manchester	10575	10186	- 389	-3.7%

Incidents of Street Cleansing and Untidy Gardens over the past three years has seen a decrease of 6.1% across the whole city. This decline across the city has been disproportionately distributed within individual areas, with South Manchester increasing 5.9%, Central Manchester a 4% decrease and North Manchester decreasing 15.4%.

Completed incidents of Street Cleansing and Untidy Gardens in the ward of Old Moat have fallen 5.5% and in looking specifically at the selective licensing area within the ward, they have decreased 39.4%. The ward of Moston has seen a decline of 31.7% - the selective licensing in Moston also declined 39.1% across 3 years – both showing more improvement than the collective of North Manchester. The selective licensing area within Moss Side increased 4.5%, however this is lower than the increase across the ward which was 27.1%.

Area	2019-20	2022-23	3-Year change	3-Year % change
Old Moat SL	33	20	- 13	-39.4%
Old Moat Ward	328	310	- 18	-5.5%
South Manchester	2679	2838	159	5.9%
Moston SL	69	42	- 27	-39.1%
Moston Ward	477	326	- 151	-31.7%
North Manchester	4294	3632	- 662	-15.4%
Moss Side SL	111	116	5	4.5%
Moss Side Ward	336	427	91	27.1%

Central Manchester	3869	3716	-	153	-4.0%
Manchester	10842	10186	-	656	-6.1%

4.3 Housing Related Requests

Housing related requests are for issues relating to Dampness & Leaks, Domestic Noise, Doors and Windows, Fire Precautions, Heating & Hot Water, Overcrowding and Unlawful Evictions. Over a five-year period, these requests have increased across the city by 1.2%. In breaking the city up, the requests have increased in Central and South Manchester (0.7% and 7.6% respectively) and decreased North Manchester (4.8% less).

Despite the increase in South Manchester, requests in the ward of Old Moat have declined 22% and the selective licensing area specifically has fallen 27%. Requests within the ward of Moston have increased 94.3% and yet the selective licensing area has seen a decrease over 5 years, with 9.7% less requests. The ward of Moss side increased by 13.9% and the licensed area by 8.6%.

Area	2017-18	2022-23	5-Year change	5-Year % change
Old Moat SL	37	27	- 10	-27.0%
Old Moat Ward	205	160	- 45	-22.0%
South Manchester	1208	1300	92	7.6%
Moston SL	31	28	- 3	-9.7%
Moston Ward	70	136	66	94.3%
North Manchester	1172	1116	- 56	-4.8%
Moss Side SL	81	88	7	8.6%
Moss Side Ward	165	188	23	13.9%
Central Manchester	1437	1447	10	0.7%
Manchester	3817	3863	46	1.2%

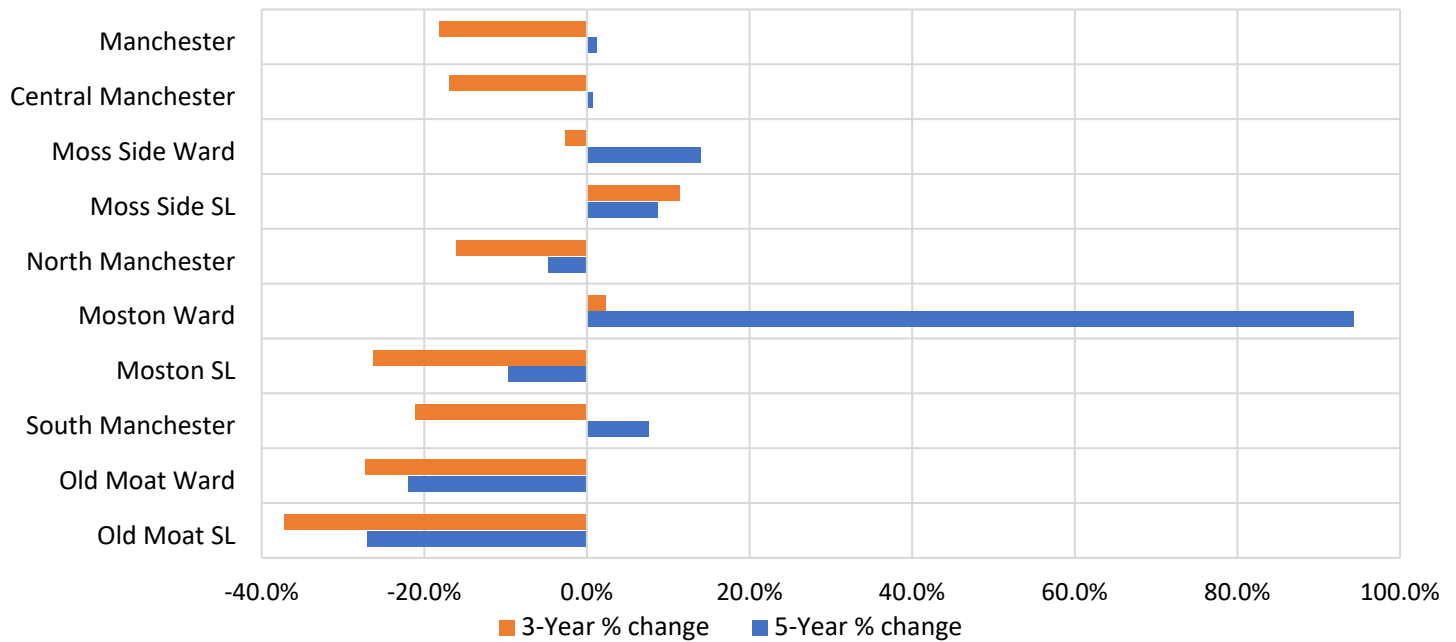
Housing related requests over the past three years has seen a decrease of 18.1% across the whole city. Considering individual areas, South Manchester has decreased 21.1%, and Central Manchester and North Manchester decreased 61.9% and 16.1% respectively.

Housing related requests in the ward of Old Moat have fallen 27.3% and in looking specifically at the selective licensing area within the ward, they have decreased 37.2%. The ward of Moston has seen an increase of 2.3% - however despite this, the selective licensing in Moston declined 26.3% across 3 years –showing more improvement than the collective of North Manchester. The selective licensing area within Moss Side increased 11.4%, which is significantly higher than across the ward which declined 2.6%.

Area	2019-20	2022-23	3-Year change	3-Year % change
Old Moat SL	43	27	- 16	-37.2%
Old Moat Ward	220	160	- 60	-27.3%
South Manchester	1648	1300	- 348	-21.1%
Moston SL	38	28	- 10	-26.3%
Moston Ward	133	136	3	2.3%

North Manchester	1330	1116	-	214	-16.1%
Moss Side SL	79	88		9	11.4%
Moss Side Ward	193	188	-	5	-2.6%
Central Manchester	1741	1447	-	294	-16.9%
Manchester	4719	3863	-	856	-18.1%

Housing Related Requests: 5 and 3 Year % Change



5. Summary / Key findings

Fly Tipping

- Old Moat SL area has lowest fly tipping per100hh from the areas
- Moston SL area has highest fly tipping per100hh from the areas
- Moss Side SL area has significant increase in fly tipping per100hh since the pandemic
- Only Moston has decreased in 3-year period (none in 5 years)
- Old Moat SL has increased more than the ward did (Moston & Moss Side increased but less than the ward increased)

Street Cleansing & Untidy Gardens

- Moss Side & Moston p100hh are higher than wards, Old Moat is less
- In 5 years of change all 3 SL areas increased less than the rest of the ward
- Only Moston SL decreased over 5 years
- Over 3 years, the decrease in Old Moat SL and Moston SL is significantly better than city wide
- Only Moss Side SL increased in 3 years, but it was still less than ward level

Housing Related Requests

- HRR in Moston SL remain significantly higher than the ward per100hh

- Old Moat SL per100hh fell after designation but rose during covid
- Across 5 years, all 3 SL areas did better than the respective wards
- Across 5 years Old Moat and Moston SL areas declined despite a city-wide increase
- Across 3 years Old Moat and Moston SL areas declined more than the city-wide decline
- More HRR in Moss Side SL than ward level